



Orphan Care Ministry:

December 2008 Newsletter:

Highlights:

- 1- Food production commenced on Orbus' Blantyre land to feed the children.
- 2- Orbus site cleared, bricks cleaned and stacked on site.
- 3- Masterplan drawings completed.
- 4- Stage One construction set to commence.
- 5- New colour brochure produced.
- 6- Photos of Orbus' land and food production on Orbus' website at www.OrbusAfrica.org

Some of the activities undertaken by and on behalf of Orbus recently include:

- Involvement in the Namatete orphan feeding and teaching program.
- Funding school fees and boarding costs for 13 orphaned children.
- Visitation and care of the sick and orphans.
- Food production to help feed the Namatete orphans.
- Goods collection and shipping from Australia.
- Site preparation and planning for the new Orbus boarding school for orphaned children.

Food Production Commenced:

Crops were planted soon after the purchase of Orbus' land with food produced from the fertile land being used to help feed the hundreds of orphaned children who come to the Namatete CCAP feeding and teaching program every Saturday.

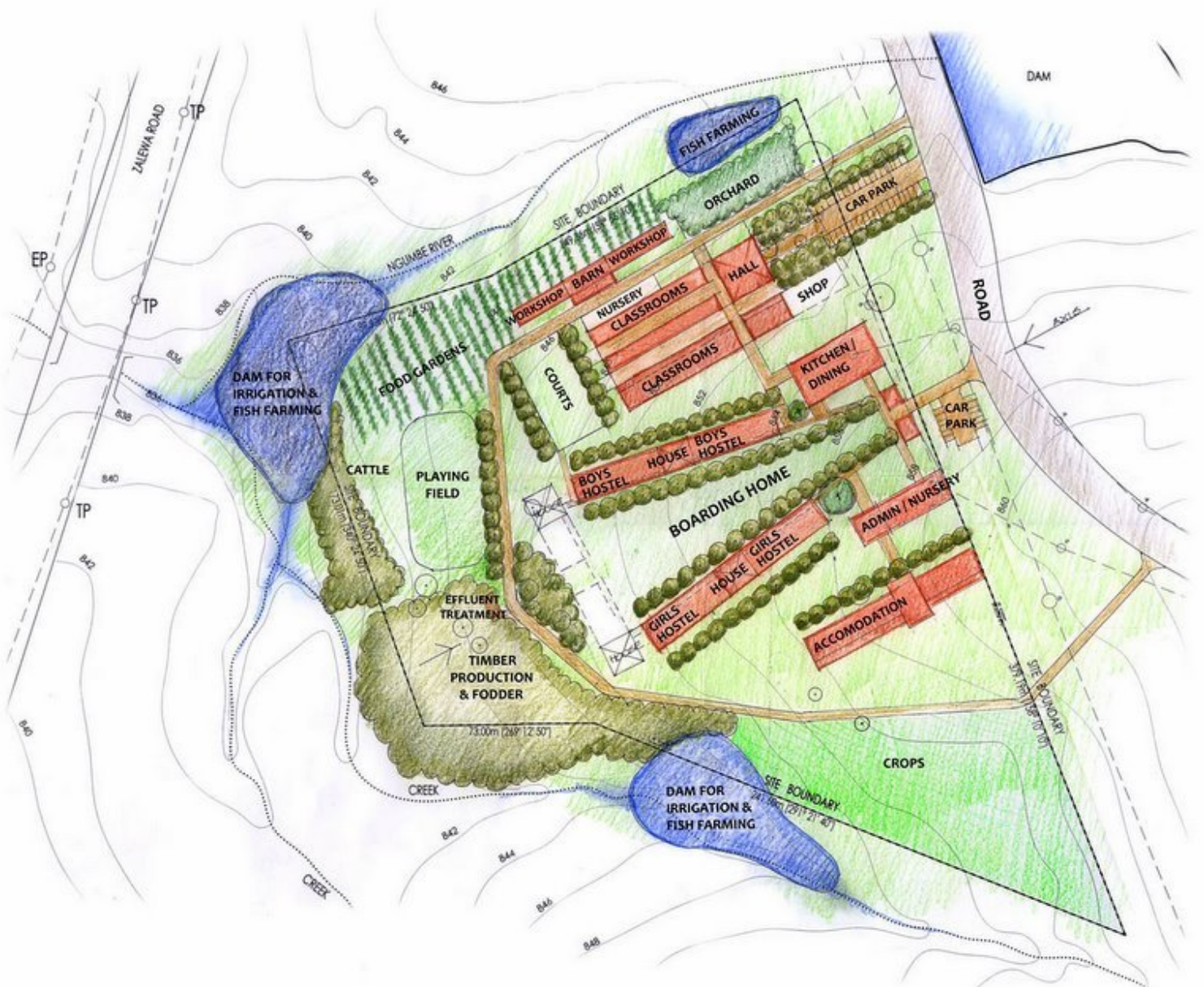


The Orbus land has been mostly cleared, and food production commenced.

The Orbus Boarding School for Orphaned Children:

Planning and site preparation has been ongoing for the development of the new Orbus boarding school, and community development centre on Orbus' 100% owned 6.202 hectare plot of land in Ngumbe Village, within the City of Blantyre, Malawi.

Masterplan and Stage 1 drawings completed: Many thanks to Robert Boyle and Gareth Le Page and staff from Robert Boyle Design and Construction in Melbourne, who have kindly donated much time and effort to prepare plans and drawings for the project. Robert visited the site with his daughter Jessica in October as part of this process, and as well as producing some outstanding plans Robert and Jessica captured some very nice [photographs](#) of the Orbus land. A selection of these photos can be seen on the Orbus website at www.OrbusAfrica.org, as can copies of the [Masterplan \(below\)](#) and the [Drawings for Stage 1](#).

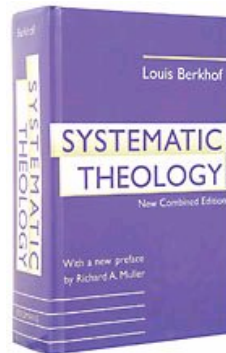
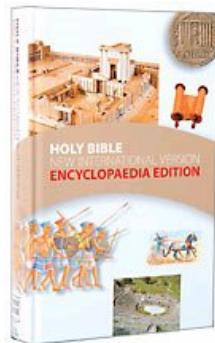


The Masterplan (above) captures the vision Orbus has of building a self-sustainable project to provide for, care for, love and nurture these beautiful African children who have lost their natural providers, their parents.

Goods Shipped from Australia:

Many thanks to everyone who provided goods for the container sent from Australia in October. Among the numerous items for the orphaned children in the container are:

- 200 [NIV Encyclopedia Edition Bibles](#) – one each for the first 200 children in the Orbus school;
- Bedding for 100 orphaned children;
- Clothes for the children;
- Toys for the children;
- 250 copies of [Louis Berkhof's "Systematic Theology,"](#) one copy each for every minister and elder in Malawi and many in Zambia (each copy has an Orbus stamp on the inside cover directing the reader to the Orbus website and ministry).



New Orbus Brochure:

A new Orbus colour brochure has been produced, once again all by volunteer help and donations of time and printing costs. You can [view the brochure online](#) at the Orbus website at www.OrbusAfrica.org. Copies are being sent to many PCA and other congregations. If you do not receive any please email us in Melbourne at admin@orbusafrica.org and we will send some to you. Alternatively they can be picked up from South Yarra Presbyterian Church.

A House for Visiting Workers:

One of the buildings planned for the Orbus site is an accommodation block/home for visiting workers from Australia (it is the one titled "Accommodation" on the Masterplan above). This has been included because we see much value in having a regular stream of workers visiting the school to volunteer their time helping at the project. Each visitor will need to be approved by the Orbus management group in Australia.

Your Prayers:

We would appreciate your prayers for:

- The swift, economical, efficient and sturdy implementation of the Master Plan.
- For the construction of the Stage 1 buildings to commence without delay.
- For the first of the orphaned children to be brought under our care once Stage 1 has been completed.
- For the ongoing food production and the feeding and teaching program by the Namatete CCAP.
- For God's protection of the children.
- For the safe delivery of the items in the sea container.
- For much fruit to come from the Bibles and the theology books over many years.

Financial Report:

For the period ending 30th November 2008 there have been donations from 16 separate Presbyterian congregations from around Australia, and additionally from 54 different individuals/groups who have together donated a total of A\$221,199.35 since Orbus was founded last year. We currently have approx. A\$108,000 remaining.

Funds are raised in Australia by the South Yarra Presbyterian Church (SYPC) and through [World Relief Inc.](#) 100% of funds raised by SYPC and 95% of funds raised through World Relief Inc are sent from Australia to Malawi.

On behalf of the children in Blantyre we thank you very much for your prayers and for what you have done for them with your support.

"Trust in the Lord, and do good; so shalt thou dwell in the land, and verily thou shalt be fed." (Psalm 37:3)

May God bless you as together we trust God and do good to these children who have lost their natural providers.

In and for Jesus Christ

Orbus Development and Aid in Central Africa Limited

Contacts:

Website: www.OrbusAfrica.org

Malawi: Colin Mbawa colin.mbawa@orbusafrica.org

Australia: Craig Manners craig.manners@orbusafrica.org

Ph: Ph: +265 839 7415 (Blantyre)

Ph: 03-9877 0312 (Melbourne)

To read more [about Orbus](#), to sign up for our newsletter and see more photos please visit our website www.OrbusAfrica.org